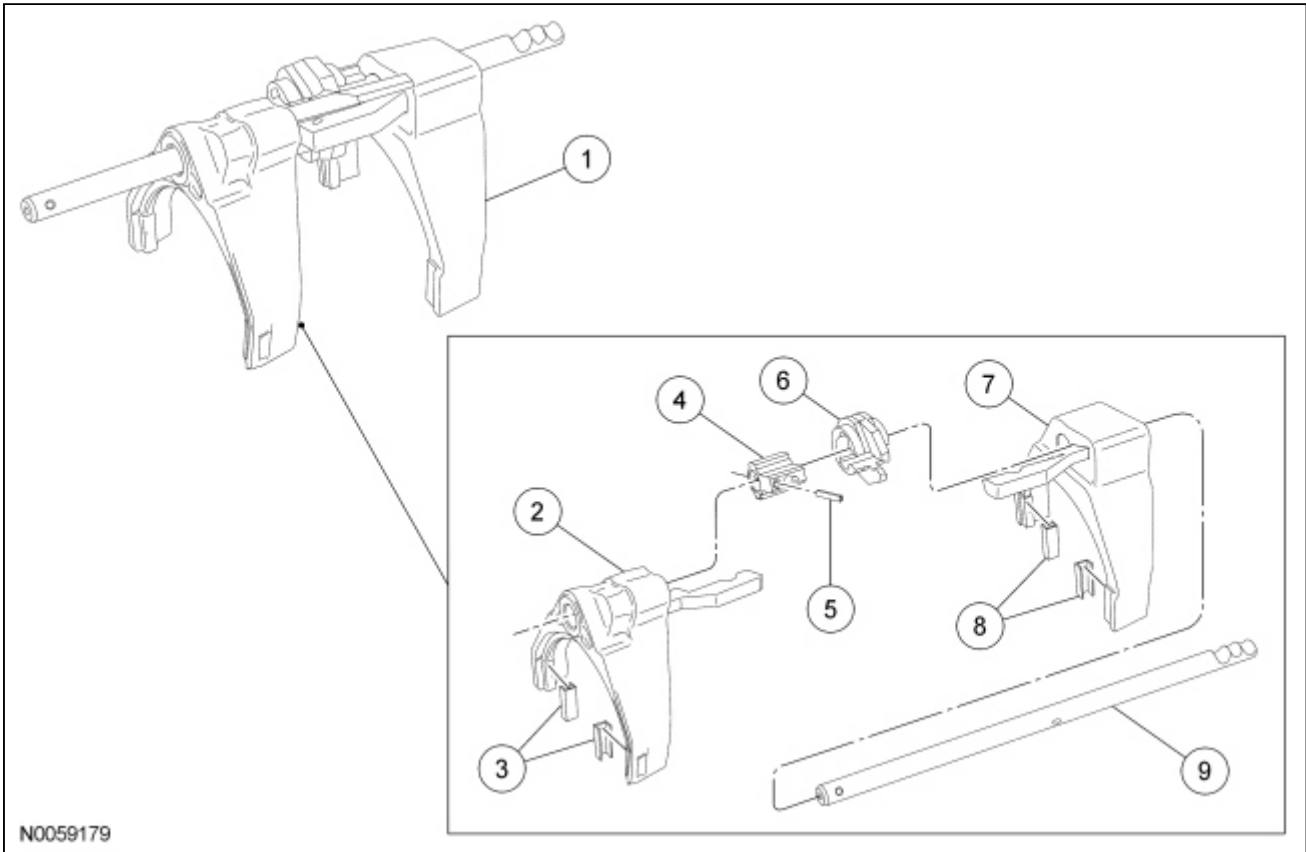


## Gearshift Rail and Fork

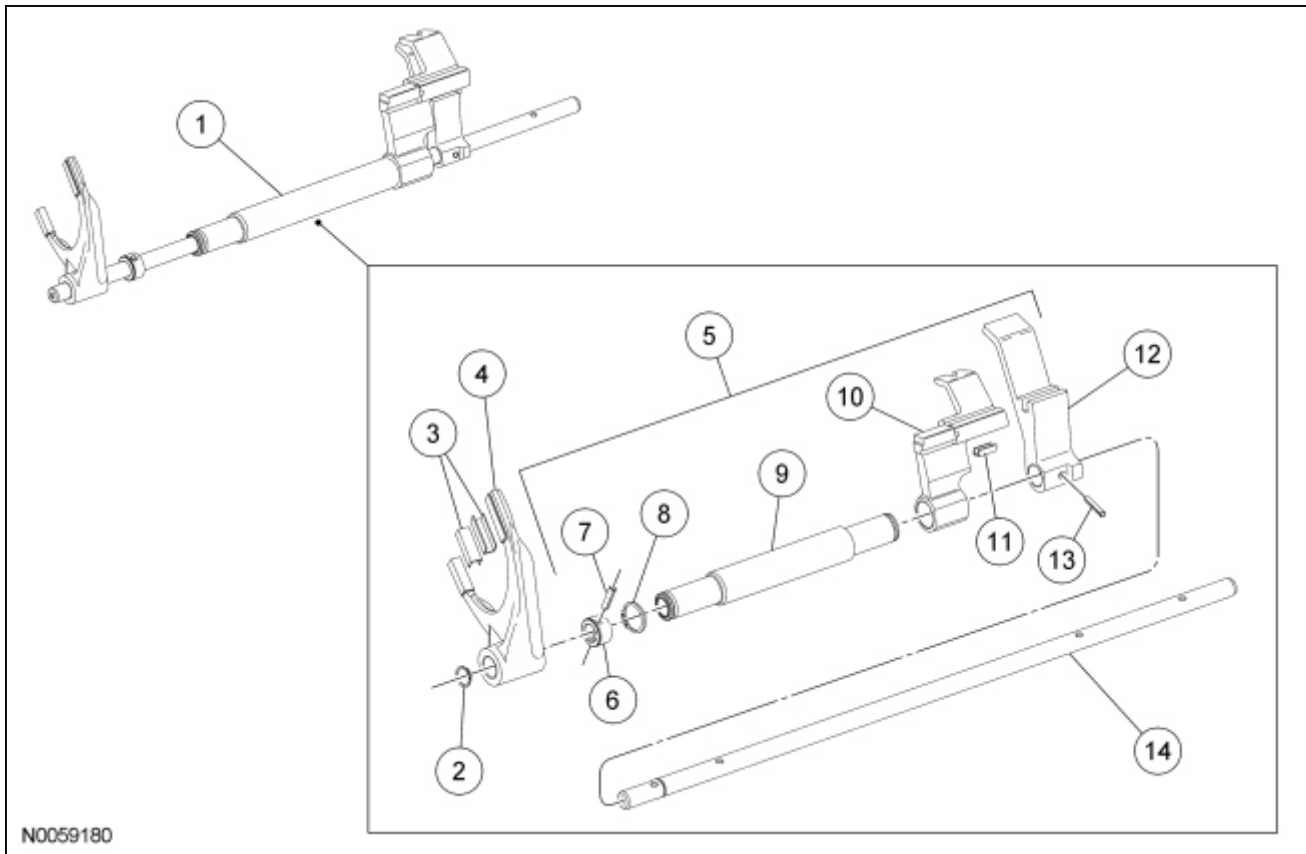
### Disassembly and Assembly

#### 1st/2nd and 3rd/4th Shift Rail Assembly



Item	Part Number	Description
1	—	1st/2nd and 3rd/4th shift rail assembly
2	7230	1st/2nd shift fork and link
3	7L082	1st/2nd shift fork pads
4	7814	Selector pin
5	7A082	Roll pin
6	7K201	Interlock plate
7	7230	3rd/4th shift fork and link
8	7L082	3rd/4th shift fork pads
9	7L267	1st/2nd, 3rd/4th shift rail

#### 5th/6th and Reverse Shift Rail Assembly



N0059180

Item	Part Number	Description
1	—	5th/6th and reverse shift rail assembly
2	7A082	Snap ring
3	7L082	Reverse shift fork pads
4	7230	Reverse shift fork
5	7241	5th/6th shift rail assembly
6	—	Shift rail collar (part of 7241)
7	—	Roll pin (part of 7241)
8	—	Snap ring (part of 7241)
9	—	5th/6th inner shift rail lever (part of 7241)
10	—	5th/6th outer shift rail lever (part of 7241)
11	—	5th/6th outer shift lever pad (part of 7241)
12	—	Reverse shift rail lever (part of 7241)
13	—	Roll pin (part of 7241)
14	—	5th/6th shift rail (part of 7241)

1. Disassemble the 1st/2nd and 3rd/4th shift rail as follows:
  - Rotate the interlock plate until it is opposite of the shift links.
  - Slide off the 3rd/4th shift fork and shift link.
  - Slide off the 1st/2nd shift fork and shift link.
  - Using a 5/32-inch drift and a hammer, remove and discard the roll pin. Remove the interlock plate.
  
2. Disassemble the 5th/6th and reverse shift rail as follows:
  - Using a 5/32-inch drift and a hammer, remove and discard the roll pins. Slide the collar and the reverse shift lever from the shift rail.
  - Remove and discard the snap ring.
  - Slide off the 5th/6th shift lever and shift link.
  - Using a press, separate the 5th/6th outer shift rail lever from the inner shift rail lever.

3. Inspect the shift rail components.
  - Check the rails, shift forks, shift levers and shift links for wear or damage. Install new components as necessary.
  - Check the shift fork pads for wear. Install new pads as necessary.
4. To assemble, reverse the disassembly procedure.
  - Install new roll pins and snap ring.

